

Anchor Points

Tuff Built Products offers a variety of products designed to place anchor points where they are needed to support fall arrest, entry retrieval, rescue and work positioning systems.

Part #	Description	Weight	Price
60243	Tie -Off Rings (Bolt On) 5/8 x 1.00 (Mild Steel CS-500)	0.30 lbs (0.14 kgs)	
60244	Tie -Off Rings (Bolt On) 1/2 x 1.00 (Mild Steel CS-500)	0.30 lbs (0.14 kgs)	
60245	Tie -Off Rings (Bolt On) 3/8 x 1.00 (Mild Steel CS-500)	0.30 lbs (0.14 kgs)	
60048	Brace, Pro-1 Door/Window 22" to 43" (56cm to 110cm)	13 lbs (5.9 kgs)	
60049	Anchor Point, Bolt on D-Ring (Mild Steel CS-500)	0.88 lbs (0.40 kgs)	
60161	Anchor Point, Bolt on D-Ring (Mild Steel CS-500)	3.5 lbs (1.6 kgs)	
60025	Anchor Point, Bolt on D-Ring (Mild Steel CS-500)	2.3 lbs (1.0 kgs)	
60292	Anchor Point, Bolt on D-Ring (304 SS)	0.7 lbs (0.31 kgs)	



PT# 60243



PT# 60244



PT# 60245



PT# 60048



PT# 60049



PT# 60161



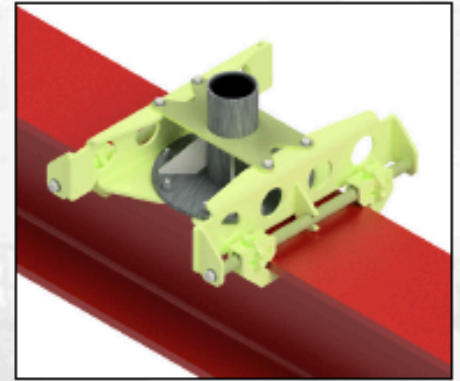
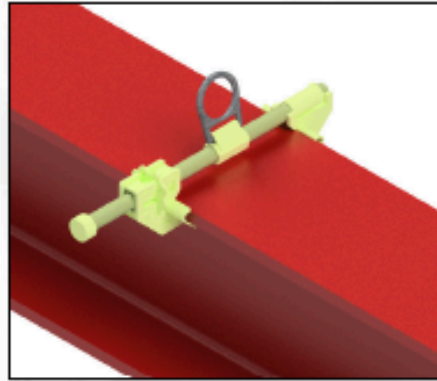
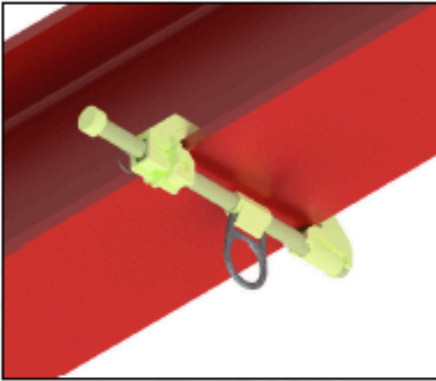
PT# 60025



PT# 60292

Beam Clamps

Part #	Description	Weight	Price
30165	Sleeve, CS-500 (1" Beam Clamp on Sleeve) 7" to 14"	65 lbs (29.5 kgs)	
60037	Anchor, Pro-1 - 1" Beam Clamp 5" to 14" (127mm to 356mm)	6 lbs (2.7 kgs)	
60038	Anchor, Pro-2 - 1" Beam Clamp 5" to 30" (127mm to 762mm)	8 lbs (3.6 kgs)	
60039	Anchor, Pro-1 - 1" Beam Slider 5" to 14" (127mm to 356mm)	8 lbs (3.6 kgs)	



Work Positioning Chair

Custom Designs

Part #	Description	Weight	Price
40004	Work Positioning Chair	7 lbs (3.2kgs)	

Custom designs to fit your requirements are available. Please call for more information.

