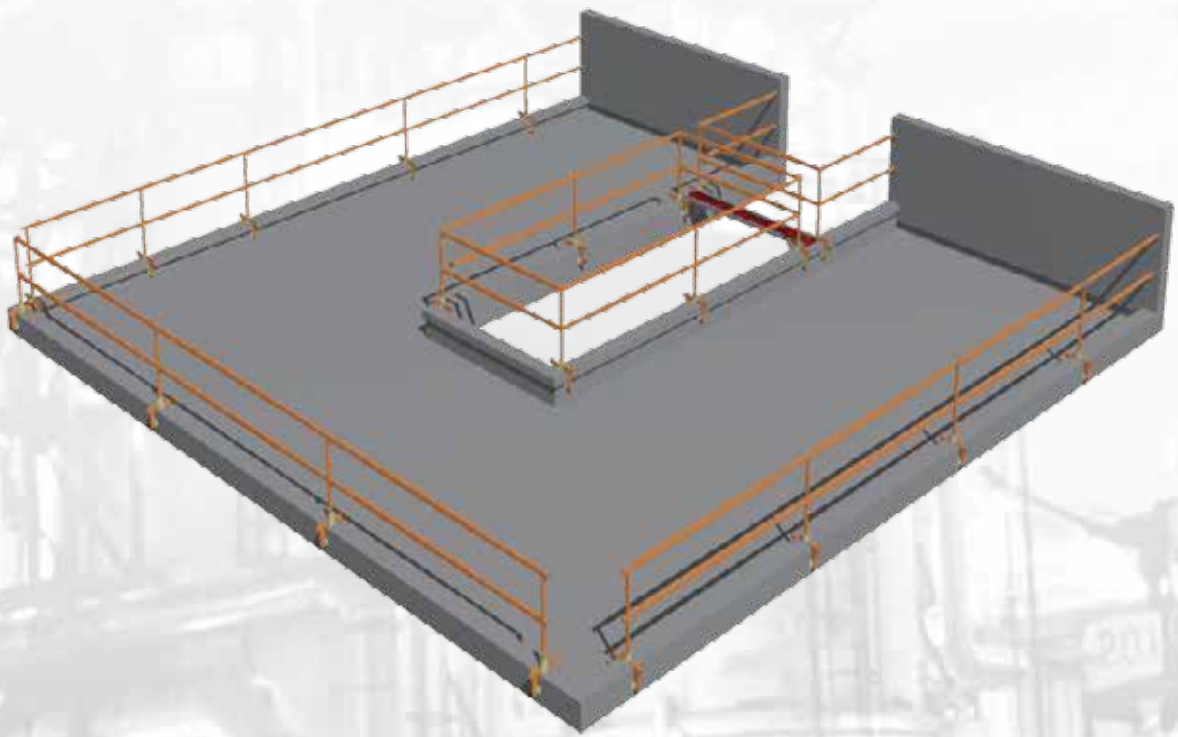


*Stay safe and be free*

# **TUFF BUILT**

PRODUCTS INC.

## Handrailing Systems and Accessories



### Features

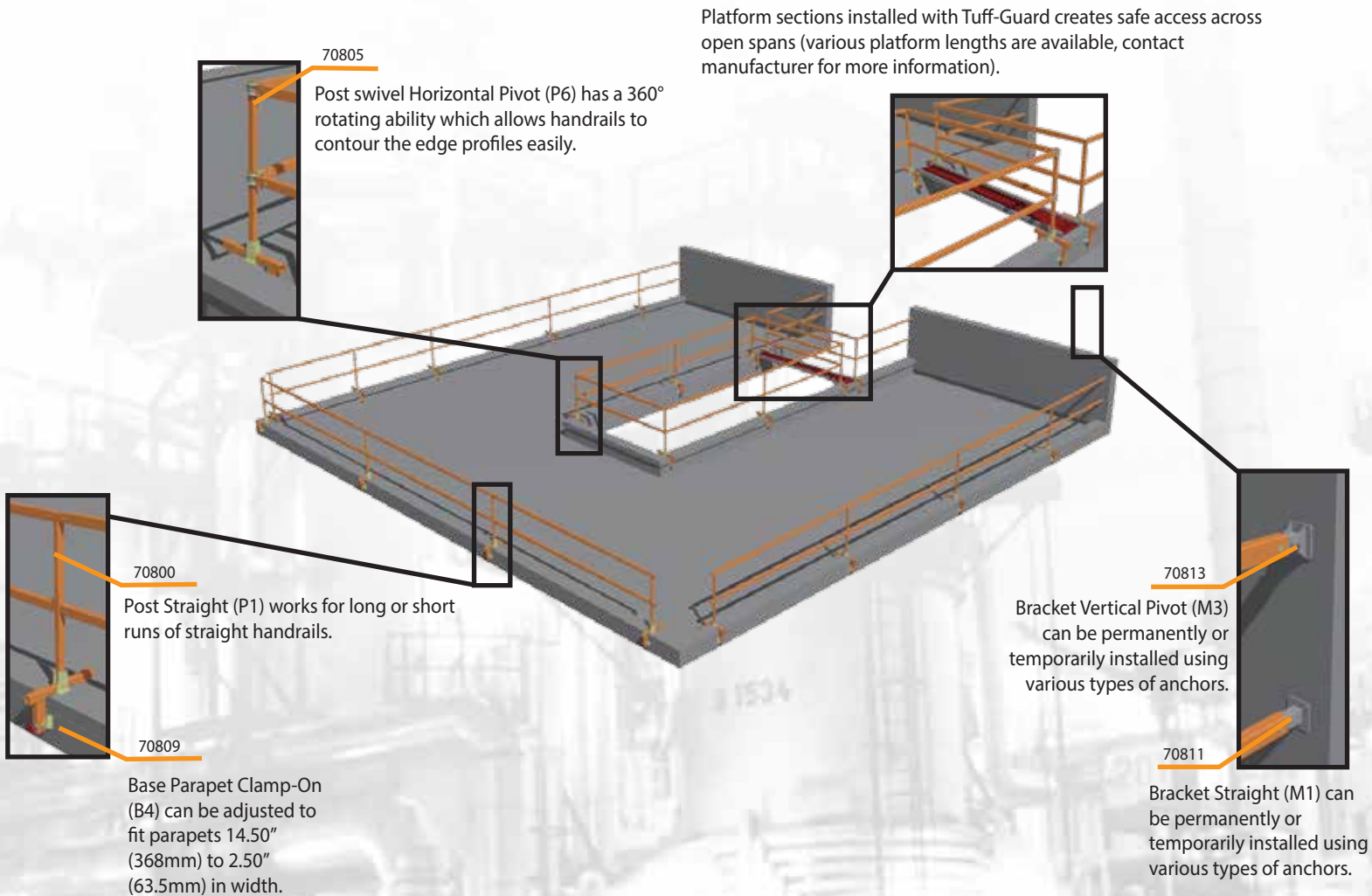
- Lightweight
- Easy, fast setup time
- Energy absorbing design

Category 13



Tuff Built Products Inc's "Tuff-Guard" Hand Railing System is a versatile product that can adapt to a variety of applications, eg: fall protection along roof edges and safe movement on inclined roofs.

The lightweight construction and interchangeable design of components allows for a wider range of uses and applications.



Hand rails are available in 2ft increments, also available are adjustable sections of 7ft to 12 ft and 10ft to 18ft.

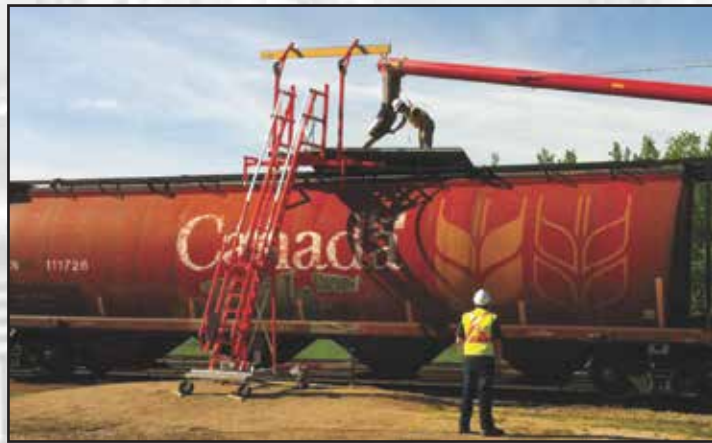
Hand rails are available in 2ft increments, also available are adjustable sections of 7ft to 12 ft and 10ft to 18ft.

Part #	Description	Style	Price
70800	Post "Straight"	P1	
70801	Post "Tee"	P2	
70802	Post "90 Elbow"	P3	
70803	Post "Straight Verticle Pivot"	P4	
70804	Post "Tee Verticle Pivot"	P5	
70805	Post "Swivel Horizontal Pivot"	P6	
70806	Base, Bolt-On (Steel)	B1	
70807	Base,	B2	
70810	Base,	B5	
70811	Bracket,	M1	
70812	Bracket, "Horizontal"	M2	
70813	Bracket, "Verticle Pivot" Wall Mount	M3	
70814	Handrail Tube 2 ft (24"/610mm); 2 Length	R2	
70815	Handrail Tube 4 ft (48"/1219mm); 2 Length	R4	
70816	Handrail Tube 6 ft (72"/1829mm); 2 Length	R6	
70817	Handrail Tube 8 ft (96"/2438mm); 2 Length	R8	
70818	Handrail Tube 10 ft (120"/3048mm); 2 Length	R10	
70819	Handrail Tube 12 ft (144"/3658mm); 2 Length	R12	
70820	Handrail 14 ft (168"/4267mm); 2 Length	R14	
70821	Adjustable Handrail Tube 10ft to 18 ft; 2 Length (84" to 144"/2134mm to 3658mm)	R1018	
70822	Adjustable Handrail Tube 7 ft to 12 ft; 2 Length (84" to 144"/2134mm to 3658mm)	R712	

**CALL OFFICE  
NEW GUARDRAILS  
BROCHURE AVAILABLE**

## Other Product Categories:

1. Winches & Accessories
2. Self Retracting Lifelines & Accessories
3. Tripods & Accessories
4. Hoists, Davits & Accessories
5. Portable Bases
6. Permanent Bases
7. Pole Hoists & Horizontal Entry Systems
8. Beam Clamps & Anchor Points
9. Mobile Stair Systems with Fall Protection
10. A-Frames & Quad-Frames
11. Mobile Horizontal Rail Systems
12. Portable Anchor Points & Restricted Space Davit Systems
13. Handrailing Systems & Accessories
14. Horizontal Rail & Trolley Systems
15. Rescue Systems & Accessories
16. Portable Fall Arrest Anchor Posts
17. Tuff-Step Access Systems & Accessories
18. Exosphere Customizable Portable Fall Protection Anchor Systems
19. Exosphere Highway Towable Fall Protection Anchor System
20. Exosphere All Terrain 4 Wheel Drive Anchor System
21. Custom Fabrication Engineering



Mailing Address:  
122 Paquin Road  
Winnipeg, Manitoba, Canada  
R2J 3V4



Toll Free: 1-877-422-6053  
Tel: 1-204-222-4025  
Fax: 1-204-222-4080  
[www.tuffbuiltproducts.com](http://www.tuffbuiltproducts.com)