

Tuff-Step provides safe temporary working access to most sloped surfaces where anchoring is possible. May be used as individual stairs or joined together for longer runs. Possible uses include road/rail embankments, river banks, gravel pits, earth retaining walls, trenching, access to accident sites, construction sites, vehicles, general hilly terrain and temporary access between building levels. Can also provide safe temporary bridging over small holes and uneven terrain.

TS Walkway

Tuff Built's NEW "TSWalkway" is designed to provide safe, clean accessibility on job sites where weather and/or heavy equipment has made the ground terrain inaccessible.

Features are:

1. Lightweight
2. Heavy duty, non-slip, UV stablized polyurethane plastic.
3. Open tread design prevents build up of ice, snow, and/or mud.
4. Maximum load is 900lbs (409.1 kgs) per sqf.
5. Can be used on slopes up to 20°.



Corner and Tee Walkway sections, along with a variety of handrail and post designs allow for custom layout for your job site.

Other Product Categories:

1. Winches & Accessories
2. Self Retracting Lifelines & Accessories
3. Tripods & Accessories
4. Hoists, Davits & Accessories
5. Portable Bases
6. Permanent Bases
7. Pole Hoists & Horizontal Entry Systems
8. Beam Clamps & Anchor Points
9. Mobile Stair Systems with Fall Protection
10. A-Frames & Quad-Frames
11. Mobile Horizontal Rail Systems
12. Portable Anchor Points & Restricted Space Davit Systems
13. Handrailing Systems & Accessories
14. Horizontal Rail & Trolley Systems
15. Rescue Systems & Accessories
16. Portable Fall Arrest Anchor Posts
17. Tuff-Step Access Systems & Accessories
18. Exosphere Customizable Portable Fall Protection Anchor Systems
19. Exosphere Highway Trailer Fall Protection Anchor System
20. Exosphere All Terrain 4x4 Fall Protection Anchor System
21. Custom Fabrication Engineering

Stay safe and be free

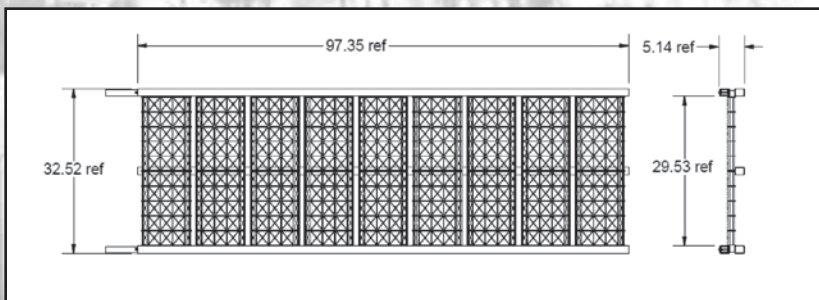


Tuff-Step Access Stair Systems and Accessories



Part #	Description	Weight
15161	TS Walkway, 9W X 97.35"	73.0lbs (33.1kgs)
15162	TS Walkway, 3W Corner 90	28.0lbs(12.7kgs)
15163	TS Walkway, 3W Tee	27.0lbs(12.2kgs)
15165	TS Walkway, Spike	1.2lbs(0.54kgs)
15166	TS Walkway, Post	5.0lbs(2.3kgs)
15182	TS Walkway, Outside Corner Post	5.5lbs(2.5kgs)
15192	TS Walkway, Inside Corner Post	6.0lbs(2.7kgs)
15183	TS Walkway, Handrail 73.00" (2pcs)	10.6lbs(4.8kgs)
15184	TS Walkway, Handrail 171.00" (2pcs)	25.0lbs(11.3kgs)
15185	Adjustable Handrail 97.50" to 150.00" (2pcs)	24.0lbs(11.3kgs)
15082	Adjustable Handrail 72.00" to 115.00" (2pcs)	17.3lbs(7.8kgs)
15186	TS Walkway, Connector	0.75lbs(0.35kgs)

TS Walkway (PT#15161) comes with 2 pcs of Connector (PT#) 15186).



Mailing Address:

122 Paquin Road
Winnipeg, Manitoba, Canada
R2J 3V4



Toll Free: 1-877-422-6053
Tel: 1-204-222-4025
Fax: 1-204-222-4080
www.tuffbuiltproducts.com

Printed in Canada

July 2017

All Rights Reserved

Copyright © 2017

Patent Pending

Pt# 117591 Rev03

Features

- Lightweight
- Easy, fast setup time
- Energy absorbing design

Category 17



Tuff- Step provides safe temporary working access to most sloped surfaces where anchoring is possible. May be used as individual stairs or joined together for longer runs. Possible uses include road/rail embankments, river banks, gravel pits, earth retaining walls, trenching, access to accident sites, construction sites, vehicles, general hilly terrain and temporary access between building levels. Can also provide safe temporary bridging over small holes and uneven terrain.

Common features of Tuff-Step are:

1. Heavy Duty non-slip thermoplastic tread.
2. Open design prevents build up of ice, snow, and mud.
3. Max load is 550lbs (250kgs) per step.
4. Adjustable slope 0-55 degree (5 position).
5. Unlimited number of steps that may be used together with or without anchors.

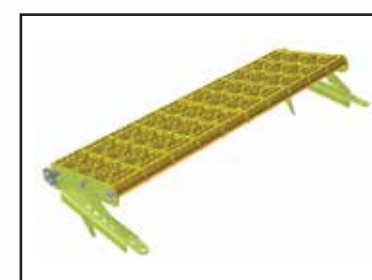


Single Steps

- Heavy duty non-slip thermoplastic tread.
- Open design prevents build up of ice, snow, and mud.
- Maximum load is 550lbs (250kgs) per step.
- Adjustable slope 0-55° (5 position).
- Unlimited number of steps may be used together, with or without anchors.



15004:
Single Narrow Step with Ground Spikes
Measures 14x17 in (356x432mm)
Weight 6.35lbs (2.88kgs)



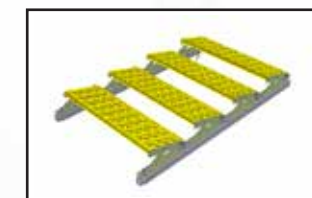
15005:
Single Wide Step with Ground Spikes
Measures 14x31.5 in (356x800.1mm)
Weight 9.80lbs (4.45kgs)

Step Sections

- Steps are mounted to Aluminum Support Tubes.
- Maximum load is 550lbs (250kgs) per section.
- Adjustable slope 0-55° (5 position).
- Unlimited number of Step sections may be used together, with or without anchors.



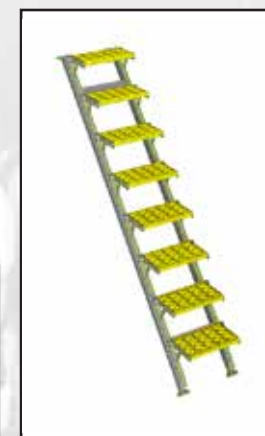
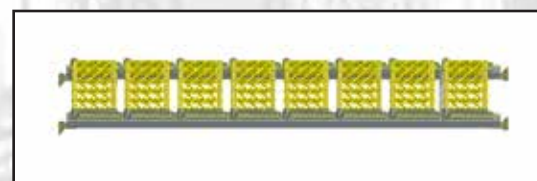
Part #	Description	Price
15006	4 Step Narrow Section	
15007	8 Step Narrow Section	



Part #	Description	Price
15008	4 Step Wide Section	
15009	8 Step Wide Section	

Portable Walkways or Ramps

- Narrow or Wide Steps permanently mounted to aluminum frames, 8, 12, 16 steps per section.
- Steps can fold down to create a flat, non-slip walkway or ramp.
- Maximum load is 550lbs (250kgs) per section.
- Handrail optional.



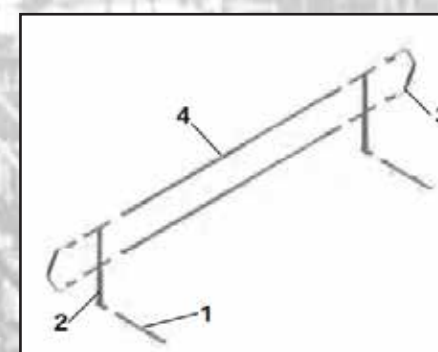
Narrow		
Part #	# steps/ approx. overall length	Price
15011	8/95.00" (2413mm)	
15013	12/141.50" (3594mm)	
15015	16/188.75" (4794mm)	

Wide		
Part #	# steps/ approx. overall length	Price
15018	8/95.00" (2413mm)	
15020	12/141.50" (3594mm)	
15022	16/188.75" (4794mm)	

Handrails

Handrails, Connection Tubes and Post Assemblies are designed to be used on Step Sections or Portable Walkways/Ramps. Connection Tubes allow users to have Handrails on one or both sides of step assemblies. Handrails are designed to "span" one section to another. Depending on the length or the "run", 1 (one) Connection Tube is required per section.

Item #	Part #	Description	Price
1	15076	Connection Tube (Narrow)	
	15075	Connection Tube (Wide)	
2	15078	Post Assembly	
3	15085	End Rail	
4	15082	Adjustable Handrail (2pcs, 72" to 115" / 1829 to 2921mm)	
*	NA	Non-Adjustable Handrails (2pcs)	



* note: Non-Adjustable Handrails are designed to fit where the Adjustable Handrails can not.

Para-Stair Narrow Step Systems

Part #	Description	Price
15136	Para-Stair, Top Landing (Narrow Assembly)	
15136	Para-Stair Assembly, 4-NS (Handrails both sides)	
15136	Para-Stair Assembly, 6-NS (Handrails both sides)	
15136	Para-Stair Assembly, 8-NS (Handrails both sides)	
15136	Para-Stair Assembly, 10- NS (Handrails both sides)	
15136	Para-Stair Assembly, 12-NS (Handrails both sides)	
15136	Para-Stair Assembly, 16-NS (8-NS 2X, Handrails both sides)	
15136	Para-Stair Assembly, 20-NS (10-NS 2X, Handrails both sides)	

Para-Stair Wide Step Systems

Part #	Description	Price
15132	Para-Stair, Top Landing (Narrow Assembly)	
15111	Para-Stair Assembly, 4-WS (Handrails both sides)	
15112	Para-Stair Assembly, 6-WS (Handrails both sides)	
15113	Para-Stair Assembly, 8-WS (Handrails both sides)	
15114	Para-Stair Assembly, 10- WS (Handrails both sides)	
15115	Para-Stair Assembly, 12-WS (Handrails both sides)	
15120	Para-Stair Assembly, 16-WS (8-WS 2X, Handrails both sides)	
15121	Para-Stair Assembly, 20-WS (10-WS 2X, Handrails both sides)	

Wide variety of heights and combinations are available. Please call for more information.

Para-Stair Common Parts

Item #	Part #	Description	Price
1	15135	Para-Stair Post Assembly	
2	15137	Para-Stair Bottom Stabilizers (2pcs)	
3	15133	Para-Stair Top/Bottom Wide Anchor (2pcs)	
4	15134	Para-Stair Top/Bottom Wide Anchor (1pc)	
5	15085	End Rail	
6	15140	Handrails, 8-step Para-Stair (2pcs)	
7	TBA	Para-Stair, Top Landing (Narrow or Wide)	
8*	TBA	Para-Stair Section (Narrow or Wide)	

*Para-Stair Sections come in increments of 4, 6, 7, 10, 12, 15, 20 and 24 steps as one piece assemblies. Multiple step can be attached to each other. i.e. 2 (two) 8 step sections can be attached together to make a 16-step assembly (i.e. PT# 15102)

Para-Stair Systems

Para-Stair Systems are self supporting stair for accessing elevated work surfaces.

Para-Stair Systems re designed so that the Stair tread remains level over an operating range of 30° to 60°.



PT# 15102: Para-Stair Assembly, 16-NS
Consists of 15136 (1X), 15135 (6X), 15137 (1X), 15085 (4X), 15141 (1X).
Maximum (60°):
Height 176.50" (4483mm) x Offset 122.63" (3115mm).
Minimum(30°):
Height 102.00" (2591mm) x Offset 196.50" (4994mm).

